

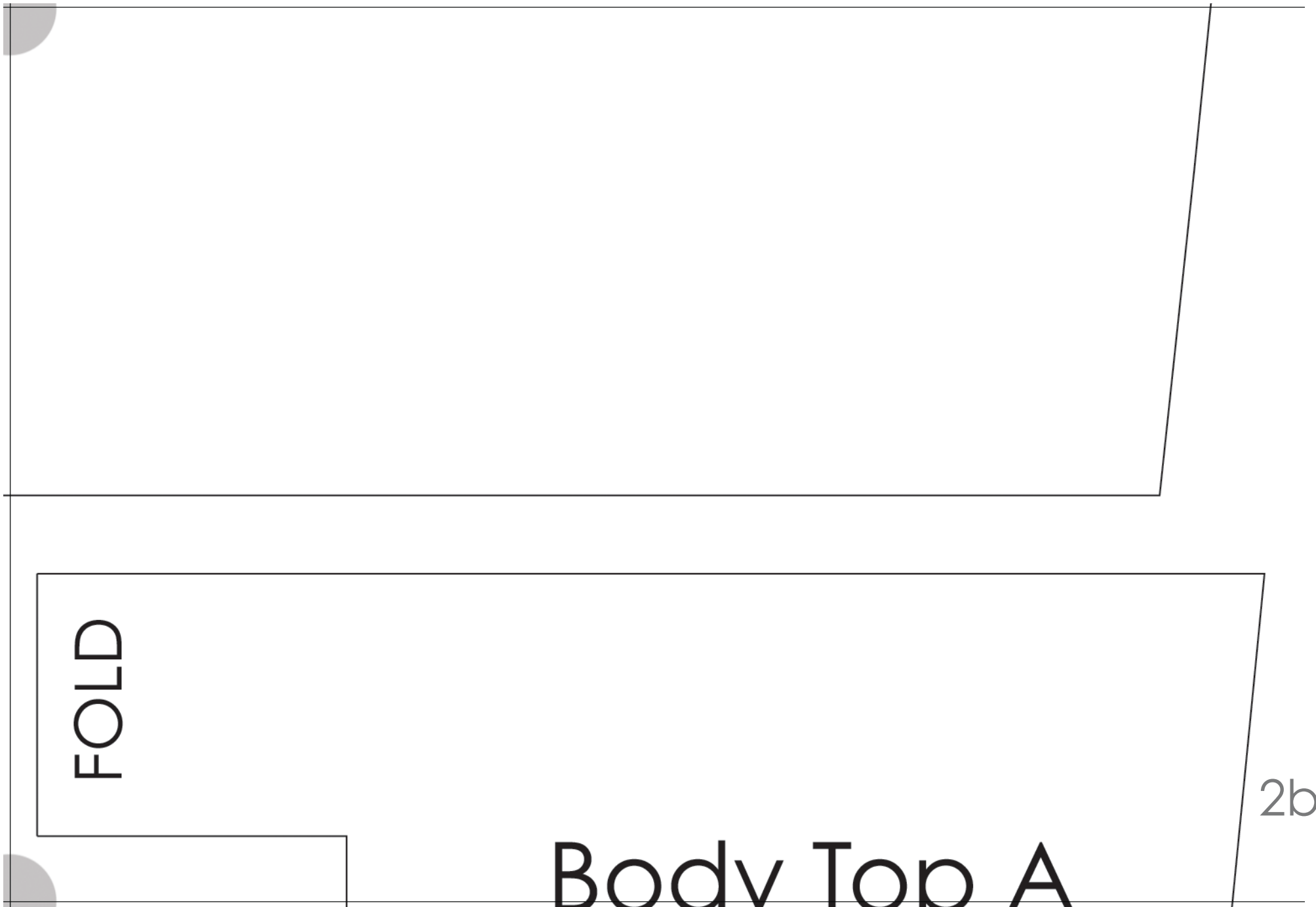


this area

Body Inner A  
Cut 1 x Felt

1b





FOLD

2b

Body Top A

FOLD

# Body Inner B

Cut 1 x Felt

**Cut on fold**

Note: 3/8 inches SA included

3a

# Body top

Cut 2 x Main fabric

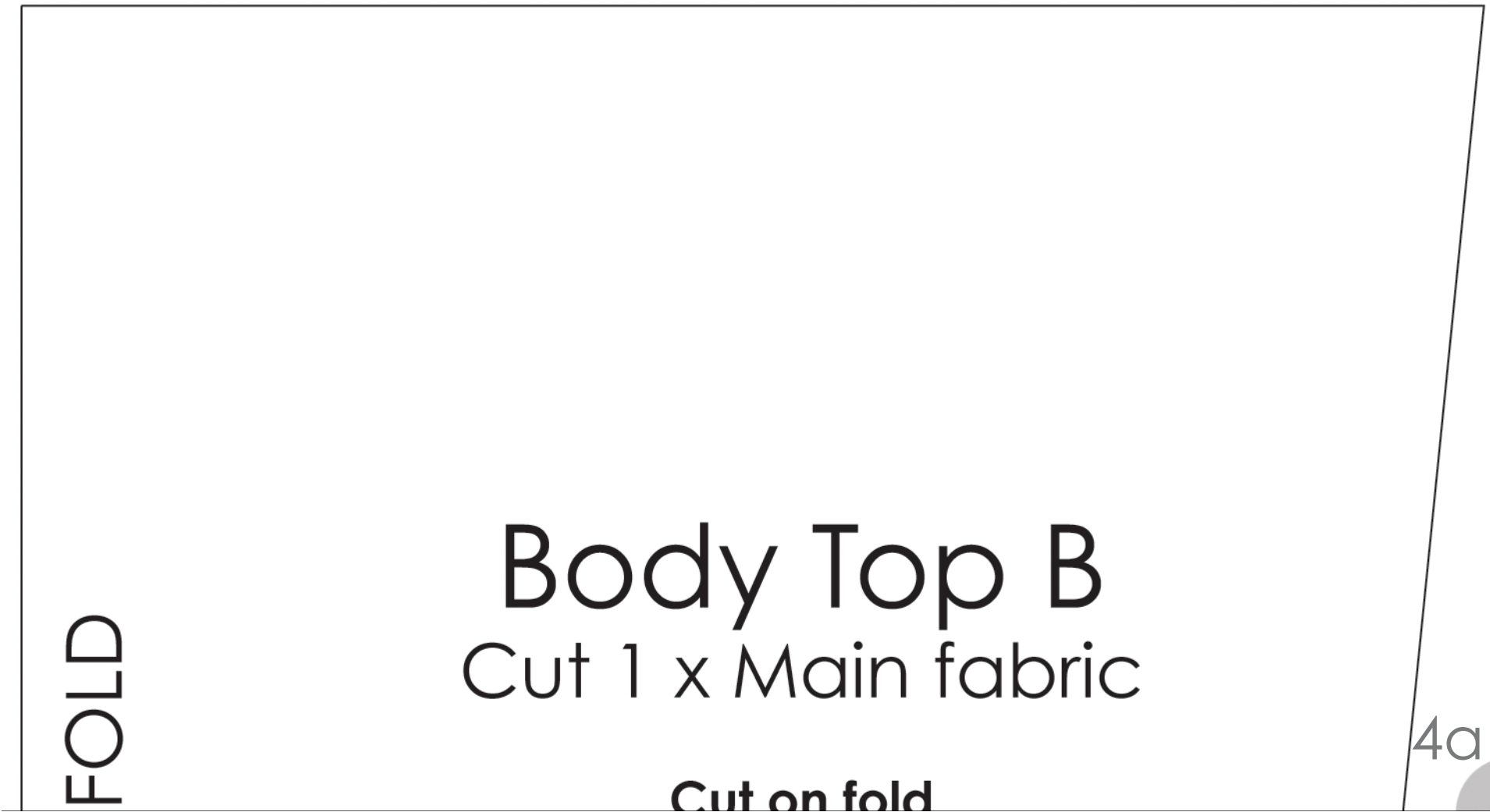
**Cut on fold**

Note: 3/8 inches SA included



**Window**

3b



FOLD

Body Top B  
Cut 1 x Main fabric

Cut on fold

4a



## WINDOW

Cut 1 x Plastic Vinyl

## Body Bottom

Cut 2 x Lace fabric

Note: 3/8 inches SA included

4b

Cut on FOLD



Note: 3/8 inches SA included

Base

Cut 1 x Main fabric

5a



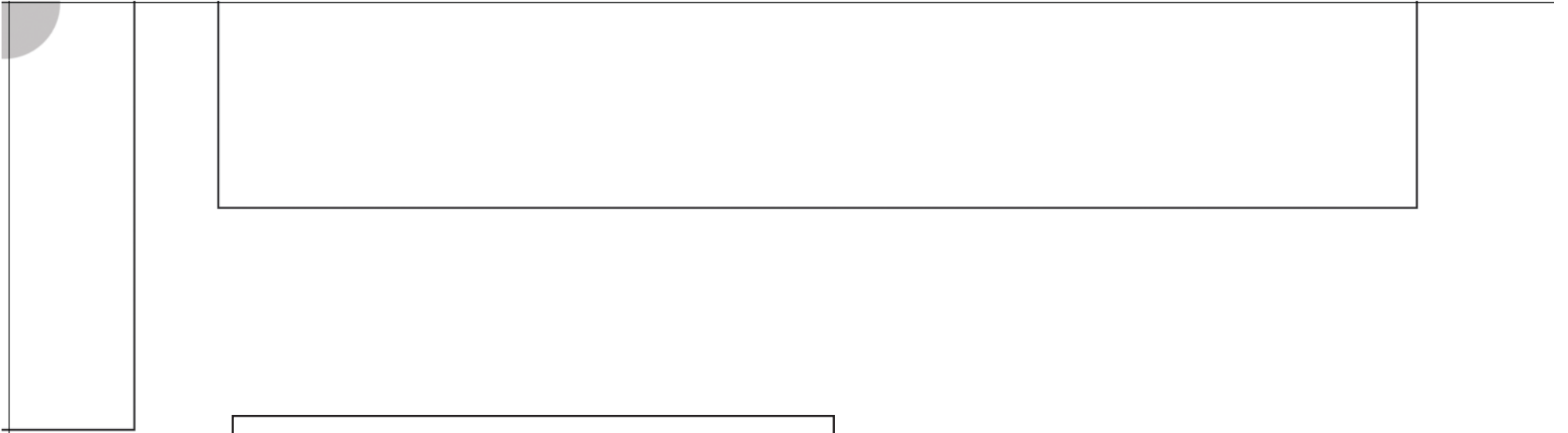
Pocket  
Cut 1 x Felt

5b

Cut 1 x Felt

# Cut 1 x Felt

Note: 3/8 inches SA included



Test square  
4 x 4 inches

Speaker Tote

6b