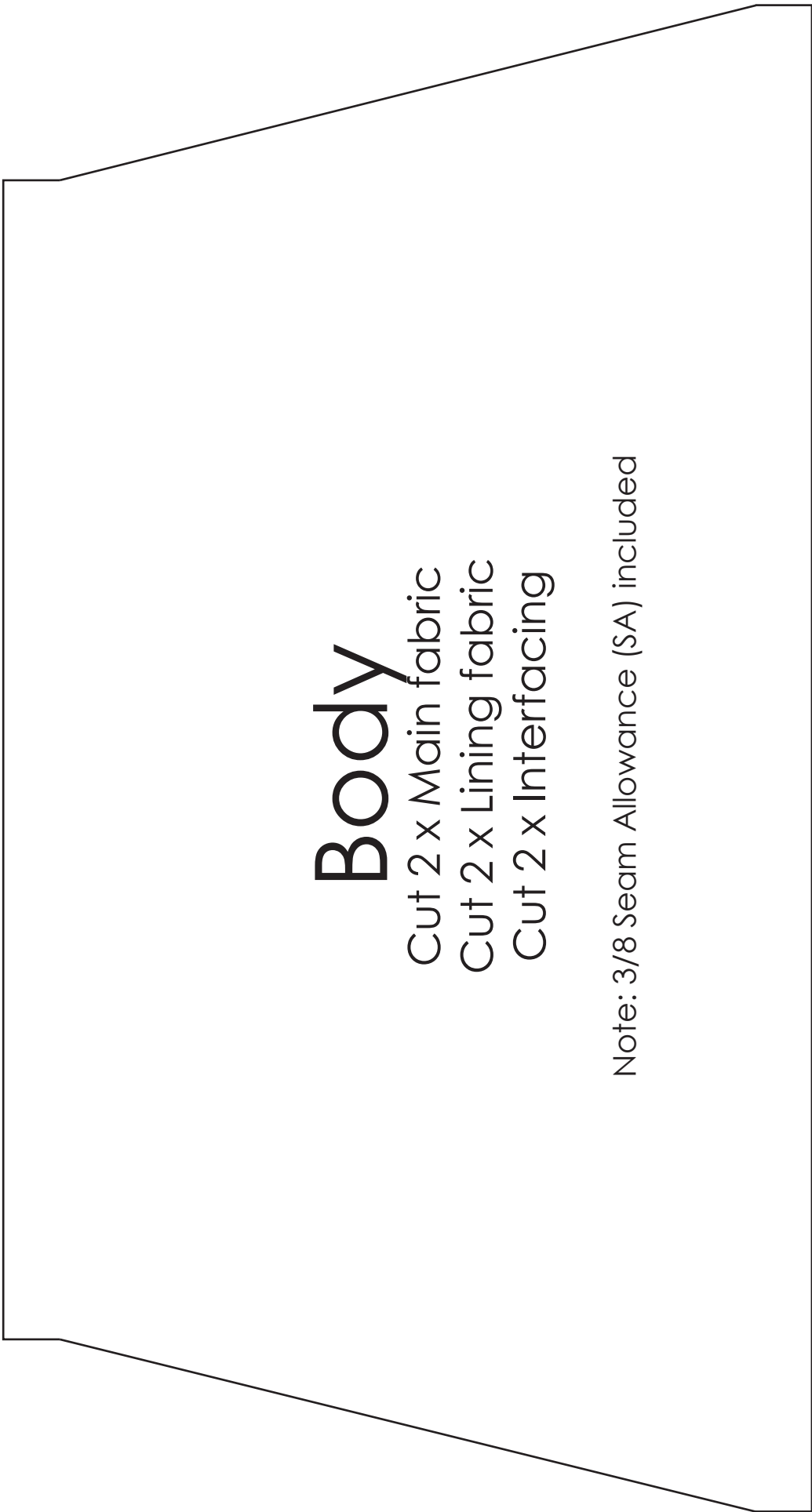


Clutch Purse Pattern



Body

Cut 2 x Main fabric

Cut 2 x Lining fabric

Cut 2 x Interfacing

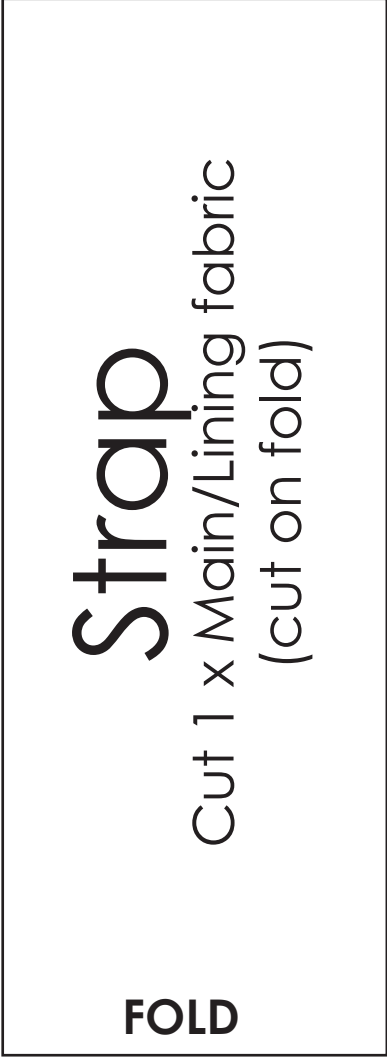
Note: 3/8 Seam Allowance (SA) included

Clutch Purse Pattern

FOLD

Strap

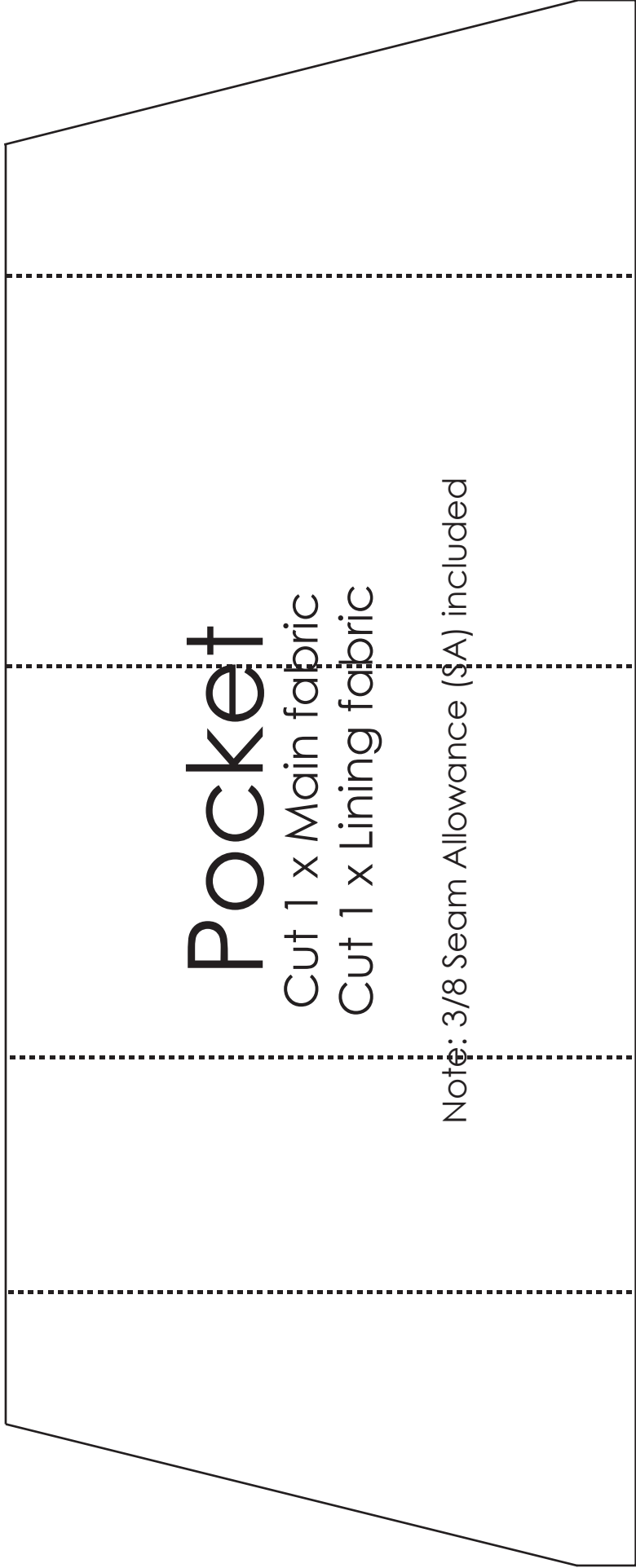
Cut 1 x Main/Lining fabric
(cut on fold)



Pocket

Cut 1 x Main fabric
Cut 1 x Lining fabric

Note: 3/8 Seam Allowance (SA) included



Clutch Purse Pattern



Clutch Purse Pattern

Flap B

Cut 1 x Main fabric

Cut 1 x Lining fabric

Cut 1 x Interfacing

Note: 3/8 Seam Allowance (SA) included

