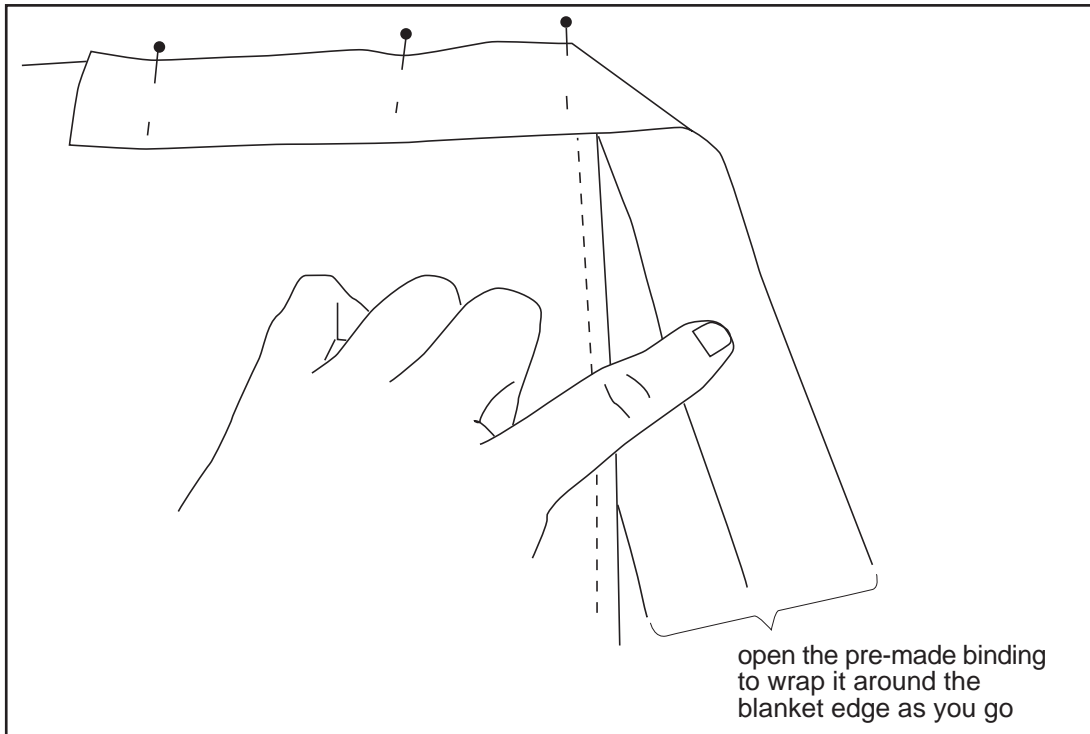
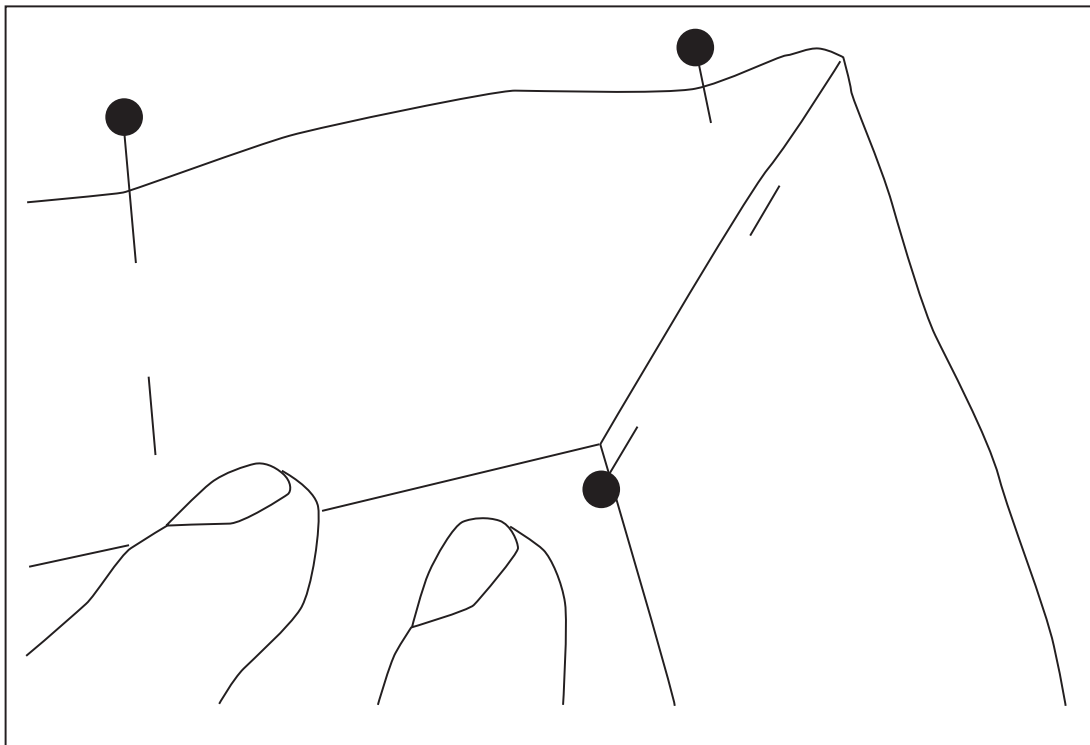


BINDING GUIDE

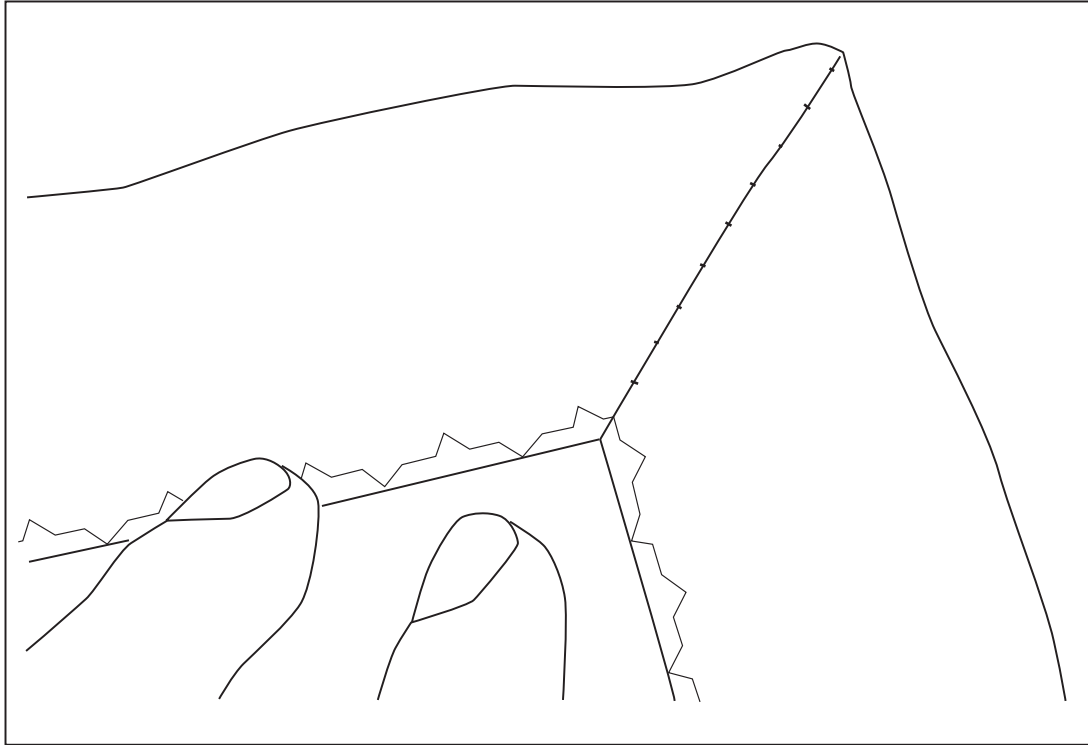
Place the binding over the edge of your blanket and pin it to about 1 cm ($\frac{1}{2}$ inch) from the end. Hold the binding close to the edge and bring it down to wrap around the blanket on the second side. It will start to form a triangle shape.



Roll the satin binding under at the corner and pin it to form a nice neat corner. Make sure that the corner pin goes through all the layers and that the binding is folded in the same way on the other side (underneath.)



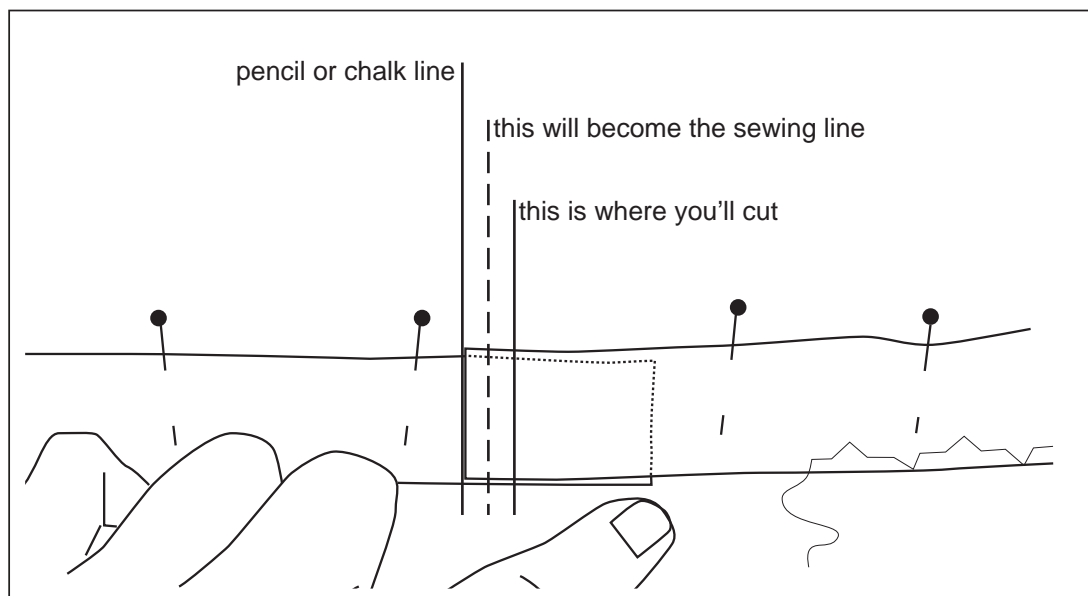
Sew along the edge of the binding with a decorative stitch. I prefer this to a zig-zag as it will not show up if you have not sewn 100% straight!
Use a hand stitch to sew the binding down along the mitred corner. If you make very tiny stitches, it will almost be invisible!



FINISHING OFF THE BINDING

Slide the "ending" of the binding inside the "beginning". Trim off some of the "ending" if you need to. Mark a line in pencil (chalk or a disappearing marker pen) at the edge of the top piece of binding. Cut the piece underneath about 1cm/1/2inch LONGER than this line.

Open up both ends of the binding, and laying the pieces right sides together, sew the 2 ends of the binding together with a 5mm/1/4inch seam. Iron the seam open then re-press the lengthwise fold in this part of the binding with the iron.



JOINING BIAS BINDING

The diagram illustrates the process of joining bias binding strips. On the left, a rectangular strip is shown with a horizontal dashed line labeled "open up the fold in the binding" and the text "right side" below it. On the right, a vertical strip is shown with a vertical dashed line labeled "open up the fold in the binding" and the text "wrong side" to its right. A diagonal dashed line indicates the stitching path across the two strips, with the ends overlapping.

STEP 1
To join bias strips, finger press the fold open at the ends to be joined. Place the two ends (with right sides together) at right angles to each other with the ends overlapping each other by about 5mm/¼inch.

STEP 2
Stitch across the diagonal as per the diagram, mark the line with pencil if needed to get a straight seam. Trim the seam back to a 5mm/¼inch.

STEP 3
Open out and press the seam open and trim off the overlapping edges. Iron the binding strip in half lengthwise, to form the fold again.

LAYOUT DIAGRAM

The layout diagram shows the pieces needed for bias binding. On the left, a vertical dimension of "26cm/ 10 inches" is indicated. The top part is labeled "single layer" and contains several pieces: two semi-circular pieces, two curved pieces, and two larger curved pieces. On the right, a vertical dimension of "41cm/16 inches" is indicated. The bottom part is labeled "double layer" and contains a large dashed outline of a double-layered binding strip. A vertical double-headed arrow is shown between the two layers of the double layer.